

Human HLA-A*02:01&B2M&MAGE-A4 (GVYDGREHTV) Monomer Protein



Cat. No. MHC-HM401

Description

| | |
|-------------------------|--|
| Source | Recombinant Human HLA-A*02:01&B2M&MAGE-A4 (GVYDGREHTV) Monomer Protein is expressed from HEK293 with His tag and Avi tag at the C-Terminus. It contains Gly25-Thr305(HLA-A*02:01),Ile21-Met119(B2M) and GVYDGREHTV peptide. |
| Accession | A0A140T913(HLA-A*02:01)&P61769(B2M)&GVYDGREHTV |
| Molecular Weight | The protein has a predicted MW of 50.5 kDa. Due to glycosylation,the protein migrates to 52-60 kDa based on Tris-Bis PAGE result. |
| Endotoxin | Less than 1EU per µg by the LAL method. |
| Purity | > 95% as determined by Tris-Bis PAGE > 95% as determined by HPLC |

Formulation and Storage

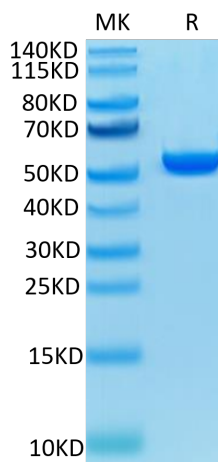
| | |
|-----------------------|---|
| Formulation | Lyophilized from 0.22µm filtered solution in PBS (pH 7.4). Normally 8% trehalose is added as protectant before lyophilization. |
| Reconstitution | Centrifuge the tube before opening. Reconstituting to a concentration more than 100 µg/ml is recommended. Dissolve the lyophilized protein in distilled water. |
| Storage | -20 to -80°C for 12 months as supplied from date of receipt. -20 to -80°C for 3-6 months in unopened state after reconstitution. 2-8°C for 2-7 days after reconstitution. Recommend to aliquot the protein into smaller quantities for optimal storage. Please minimize freeze-thaw cycles. |

Background

Melanoma-associated antigen 4 is a protein that in humans is encoded by the MAGEA4 gene. The MAGE- A4 antigen is among the most commonly expressed cancer testis antigens. The Human HLA-A*0201 MAGE-A4 (GVYDGREHTV) complex Protein is a complex of HLA-A*0201 of the MHC Class I, B2M and GVYDGREHTV peptide of the MAGE-A4.

Assay Data

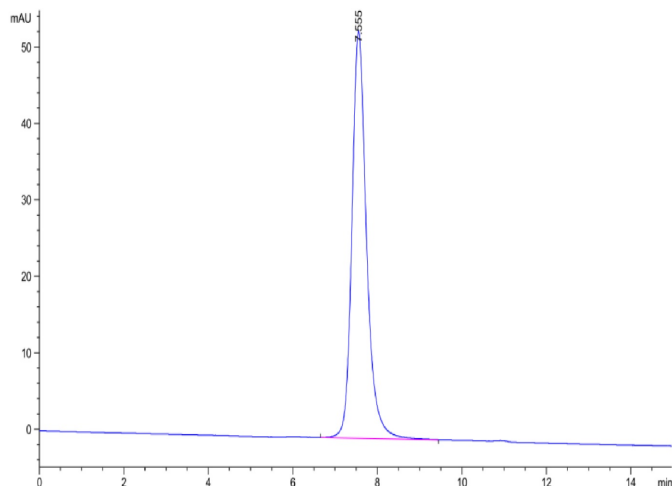
Tris-Bis PAGE



Human HLA-A*02:01&B2M&MAGE-A4 (GVYDGREHTV) Monomer on Tris-Bis PAGE under reduced condition. The purity is greater than 95%.

SEC-HPLC

Assay Data

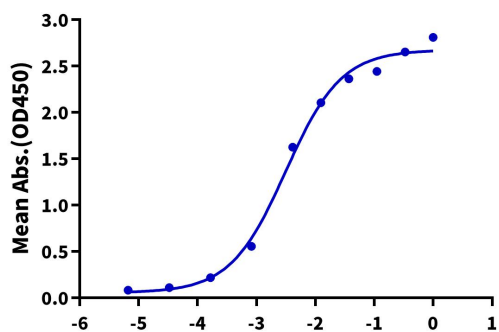


The purity of Human HLA-A*02:01&B2M&MAGE-A4 (GVYDGREHTV) Monomer is greater than 95% as determined by SEC-HPLC.

ELISA Data

Human MAGE-A4 (HLA-A*02:01), His Tag ELISA

0.05µg Human MAGE-A4 (HLA-A*02:01), His Tag Per Well



Immobilized Human HLA-A*02:01&B2M&MAGE-A4 (GVYDGREHTV) Monomer , His Tag at 0.5µg/ml (100µl/Well) on the plate. Dose response curve for Anti-HLA-A*02:01&B2M&MAGE-A4 (GVYDGREHTV) Antibody, hFc Tag with the EC50 of 3.1ng/ml determined by ELISA.

Log Anti-MAGE-A4 (HLA-A*02:01) Antibody, hFc Tag Conc.(µg/ml)